

# The Rotary Foundation

Susan Johnson , DRFC, 2018-2021

Michael Soden, District Grants

Chehab El Awar, Global Grants

Mark Mariscal, Annual Programs Fund-SHARE

Bill Payne, Scholarships

# Susan Johnson

Rotarian since December 2003

Rotary Club of Green Valley, Past President (2006-07),  
Foundation Chair (2007-Present)

Annual Programs Fund-SHARE, So. NV Co-Chair, Chair  
*Currently, District 5300 Rotary Foundation Chair, 2018-2021*

# Levels of Giving and Recognition Awards

- ❑ Every Rotarian, Every Year (EREY)
  - \* Club Banner Recognition for clubs achieving a minimum Annual Program Fund (APF) contribution of \$100 per capita during the Rotary year and every dues-paying member must personally contribute at least \$25 to APF during the year.



# Levels of Giving and Recognition Awards

## ❑ 100% Foundation Giving Club

- \* Club Banner Recognition for clubs achieving an average of \$100 in per capita giving and 100 percent participation, with every dues-paying member contributing at least \$25 to any or all of the following during the Rotary year: APF, PolioPlus Fund, approved global grants or Endowment Fund.



# Levels of Giving and Recognition Awards

## □ 100% Paul Harris Fellow Club

- \* For clubs in which all dues-paying members are Paul Harris Fellows. **This is a one-time recognition.**

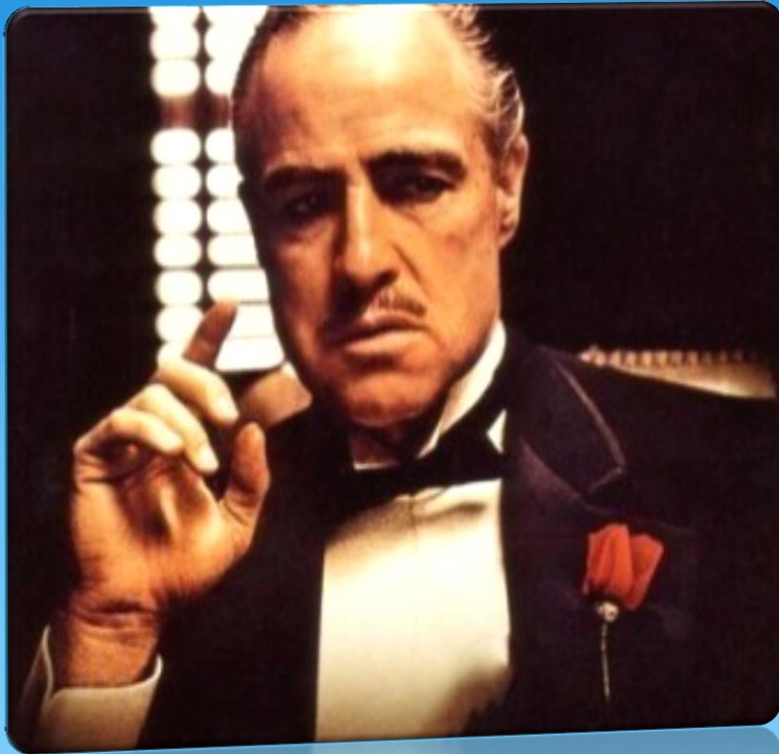




## *Of District 5300's 63 Clubs, 22 or more than one-third are 100% PHF Clubs!*

*Rotary Club of Alhambra, 2009-2010  
Rotary Club of Antelope Valley, 2018-2019  
Rotary Club of Arcadia, 2018-2019  
Rotary Club of Azusa, 2009-2010  
Rotary Club of Boulder City Sunrise, 2019-2020  
Rotary Club of Chino Valley, 2008-2009  
Rotary Club of Claremont, 2008-2009  
Rotary Club of Glendora, 2009-2010  
Rotary Club of Green Valley, 2013-2014  
Rotary Club of Lancaster, 2008-2009  
Rotary Club of Lancaster Sunrise, 2011-2012*

*Rotary Club of Las Vegas, 2010-2011  
Rotary Club of Las Vegas Southwest, 2007-2008  
Rotary Club of Las Vegas Spring Mountains, 2018-2019  
Rotary Club of Las Vegas Summerlin, 2014-2015  
Rotary Club of Las Vegas West, 2011-2012  
Rotary Club of LaVerne, 2-18-2019  
**Rotary Club of Mesquite Sunrise – Coming Soon!**  
Rotary Club of North Las Vegas, 2008-2009  
Rotary Club of San Marino, 2009-2010  
Rotary Club of South Pasadena, 2019-2018  
Rotary Club of Upland, 2018-2019*



## *An Offer You Can't Refuse!*

District 5300 will match up to 500 of its recognition points to monetary donations made by non-PHF Rotarians to The Rotary Foundation or by those desiring to recognize the accomplishments of the non-PHF with recognition points or donation of money.

**Deadline: When all District 5300's recognition points are GONE!**

# Levels of Giving and Recognition Awards

## □ Top Three per Capita

- \* Club Banner Recognition for the three clubs in each district that give the most, per capita, to the Annual Fund. Clubs giving at least \$50 per capita are eligible ... awarded annually at the end of the Rotary year.





# Levels of Giving and Recognition Awards

## □ Paul Harris Fellow

- \* A Paul Harris Fellow is awarded, when you give \$1,000 or more to the Annual Fund, PolioPlus, or an approved Foundation grant. To recognize someone else as a Paul Harris Fellow, you can give that amount in their name. You are recognized as a Multiple Paul Harris Fellow with each additional gift of \$1,000.



# Levels of Giving and Recognition Awards

## ❑ Paul Harris Society

- \* When you elect to contribute \$1,000 or more annually to the Annual Fund, PolioPlus, or an approved Foundation grant.



# Levels of Giving and Recognition Awards

## ❑ Major Donor Levels

- \* Major Donor, when your cumulative donations reach \$10,000. You can choose to receive a crystal recognition piece and a Major Donor lapel pin or pendant. Recognition items commemorate giving at these levels:
- \* Level 1: \$10,000 to \$24,999
- \* Level 2: \$25,000 to \$49,999
- \* Level 3: \$50,000 to \$99,999
- \* Level 4: \$100,000 to \$249,999



# Levels of Giving and Recognition Awards

## □ Major Donor Levels

- \* When your cumulative donations reach \$250,000 recognition includes an induction ceremony and your picture and biography in the Arch Klumph Society gallery in Evanston. You also receive invitations to society events, along with membership pins and crystals that commemorate giving at the following levels..
  - \* Trustees Circle: \$250,000 to \$499,999
  - \* Chair's Circle: \$500,000 to \$999,999
  - \* Foundation Circle: \$1 million and above



# Levels of Giving and Recognition Awards

## ❑ Bequest Society

- \* Bequest Society membership is awarded when you give \$10,000 or more via your estate plans. Bequest Society members are recognized with an engraved crystal recognition piece and a Bequest Society pin.

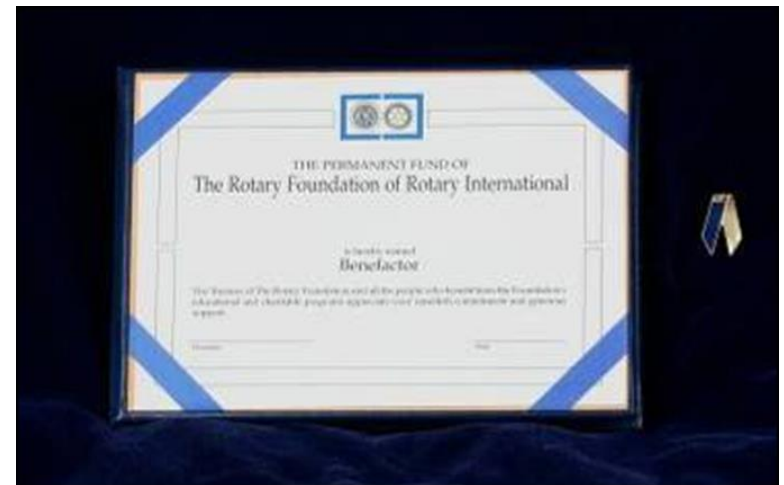


- \* *Cost to the Bequest Society member while he/she is alive: NOTHING! Money does not transfer until the member has passed.*

# Levels of Giving and Recognition Awards

## ❑ Benefactor

- \* When you include the Endowment Fund as a beneficiary in your estate plans or when you donate \$1,000 or more to the fund outright. Benefactors receive a certificate and insignia to wear with a Rotary or Paul Harris Fellow pin.



# Mark Mariscal

Rotary Club of Altadena, President

Paul Harris Fellow

Currently serving District on DDF Grants Committee

In 2020-2021, will serve as Annual Programs Fund-SHARE Chair

## Annual Programs Fund-SHARE

# TRF Funds



**PolioPlus Fund**  
End Polio Now



**Annual Fund**  
For Support Today



**Endowment Fund**  
To Secure Tomorrow



# Annual Fund



- \* The Annual Fund is the primary source of funding for Foundation grants and programs
  - SHARE contributions are split between the Foundation's World Fund and the District Designated Fund (DDF)
    - And is the only Annual Fund designation that generates funding for the District Designated Fund
    - District 5300 allocates DDF to fund foundation activities in which we (the district and the clubs) choose to participate

# Annual Fund

- WORLD FUND contributions:
  - provide the Foundation's portion of funding for approved grants and other program support
  - The Trustees manage these funds and make them available to all districts for the matching portion of global grants



# Annual Fund

- AREAS OF FOCUS contributions provide the Foundation's portion of funding for critical humanitarian issues:
  - Promoting Peace
  - Fighting Disease
  - Providing Clean Water
  - Saving Mothers and Children
  - Supporting Education
  - Growing Local Economies



# Annual Fund

- AREAS OF FOCUS contributions:
  - Are counted toward a club's annual giving goal and per capita calculations
  - Are eligible for all Annual Fund recognition opportunities and count toward all club recognition opportunities
  - Are **not** included in a district's SHARE calculation and do not generate DDF

# Restricted Giving

## \* Polio Plus

- Money that is contributed to the PolioPlus Fund is used solely for the purpose of achieving the worldwide eradication of polio
- Rotarians are asked to continue contributing to the PolioPlus Fund until worldwide polio eradication is certified.



# Endowment Fund

- \* Contributions to the Endowment Fund:
  - Invested to preserve and increase the principal
  - A percentage is spent each year to support Foundation grants and programs
  - Growing to meet a goal of \$2.02 billion in assets by 2025



# Programs of the Foundation

- \* Rotary Peace Centers Program provides 100 Rotary Peace Fellowships for master's students each year:
  - International Relations
  - Peace
  - Conflict Resolution, and
  - professional development certificates in peace and conflict studies

# End Polio Now Campaign

- \* 12 Wild Polio Cases YTD
- \* 29 new Cases in 2019



*Far cry from the peak in 1952 where, in US, 57,879 were inflicted, and of that number, 3,145 resulted in deaths.*



# Chehab El Awar

Rotary Club of Las Vegas WON

District 5330, Past District Governor

Major Donor

Currently serving District 5300 as Global Grants Chair

## Global Grants

# Global Grants

- Global grants support *large international activities* that:
  - Have sustainable, measurable outcomes in Rotary's areas of focus
  - District or club grant sponsors can form international partnerships
  - Global grants offer a minimum World Fund award of \$15,000 for a minimum project budget of \$30,000
  - Global grants must have two primary sponsors
  - Global grants require a matching of funds

# Global Grants

To Qualify for District Diversified Funds (DDF) and Global Grants, the Club must:

1. Input Goals into Rotary Central
2. Attend Grants Management Seminar
3. Review and sign Memorandum of Understanding

# Useful links as resources for our Rotarians.

-All the links to RI website, including Project Lifecycle resources .

[https://drive.google.com/file/d/16Fil97DW\\_a8LZdkitndtLZJrLlf\\_G5ZK/view?usp=drivesdk](https://drive.google.com/file/d/16Fil97DW_a8LZdkitndtLZJrLlf_G5ZK/view?usp=drivesdk)

-District Resources Network vision

<https://drive.google.com/file/d/0Bzltzx3hz5F-MEh0b1VVeGtyM28/view?usp=drivesdk>

-Rotary show case

[https://map.rotary.org/en/project/pages/project\\_showcase.aspx](https://map.rotary.org/en/project/pages/project_showcase.aspx)

-Matching grants .org

<https://www.matchinggrants.org/>

# Michael Soden

Rotary Club of Green Valley, Past President

Nevada Rotary Foundation, Director

Paul Harris Fellow

Currently Serving as District 5300's Grants Chair

## DDF—District Grants

# District Grants


- \* Designed to fund small-scale, short-term activities, including:
  - Humanitarian Grants
  - Scholarships
  - Vocational Training Teams

*To qualify for application, clubs must:*

- 1. Input goals into Rotary Central*
- 2. Review and sign Memorandum of Understanding (MOU)*
- 3. Deadline for Applications: October 15, 2020  
(First and second round)*

# District Grants:

1. Unlike applying for Global Grants, there does not need to be a match in funds
2. DDF received by the District is one-half of funds donated to Annual Program Funds-SHARE three (3) years prior or in 2017-2018
3. In District 5300, District Grants available to clubs are funded with one-half of DDF returned to District, percentage of Endowment Funds, and funds remaining from previous Rotary Year. At this juncture, it appears \$124,182 will be allotted to clubs for District Grants in 2020-2021. *But it may be more...*

- 
1. District Grants are allotted to clubs based upon the average percentage of their contributions to Annual Programs Fund-SHARE during the prior three years.
  2. For example, RC of Green Valley's average contribution during prior 3 years was \$11,842 or 3.29% of average clubs' giving. 3.29% of \$124,182 is \$4,087. RC of Green Valley is eligible to apply for up to \$4,087.
  3. Irrespective of giving, however, each club will be eligible to apply for a minimum of \$300.
  4. Monies allotted to clubs that do not apply will be available for a "second round;" amount available will be determined by what is unallocated and number of clubs that apply for those funds.



# District Grants Application Process

1. Login into DACdb>District>Grants>Club Grant View
2. Create the Grant request
3. Send out for Club Signatures
4. Send onto District for initial approval.
5. Prepare final report and send out for club signatures.
6. Send onto District for final approval no later than April 1 2021
7. Checks will be issued and delivered at the District Conference in May.

Training video: <https://vimeo.com/205471262>

# D-5300 GG/Peace Fellow Scholarship Opportunities

Bill Payne, District Chair

San Marino Rotary

[Bill.payne10@gmail.com](mailto:Bill.payne10@gmail.com) 626.252.9505

# District Global Grant Scholar & Peace Fellowship Program / Opportunity

(June 25, 2020)

## 1. **Two Types:**

- A. GG scholarships: \$31k: \$15k from RI; \$15k from D-5300; \$1k from sponsoring Club
- B. Peace Fellowships: about \$75k...all from RI (choice of only 6 universities)

## 2. **GG Scholarship and Peace Fellowship Committee**

## 3. **Global Grant Scholar Successes and Process:**

- A. Past GG Scholars
- B. 2019-20 Global Grant Scholars being processed
- C. Global Grant Application Process
- D. Areas of Focus (6)

## 4. **Peace Fellow Successes and Process:** (Dee Matreyek, Claremont Club)

- A. Past Peace Fellows
- B. Peace Fellowship Centers
- C. Peace Fellowship Application Process

## 5. **How To Recruit Scholar Candidates**

## GLOBAL GRANTS SCHOLAR AND PEACE FELLOW DISTRICT 5300 COMMITTEE

2019-20

1. Lu Arredondo	<a href="mailto:rotarylu@gmail.com">rotarylu@gmail.com</a>	GSGV	626.703.3041
2. Betsy Barry	<a href="mailto:rotarybetsy5300@yahoo.com">rotarybetsy5300@yahoo.com</a>	Upland	909.518.6828
3. Lu De Sylva	<a href="mailto:rotarydesylva@gmail.com">rotarydesylva@gmail.com</a>	Walnut Valley	951.285.1777
4. Marilyn Diaz	<a href="mailto:diazwalker@icloud.com">diazwalker@icloud.com</a>	Sierra Madre	626.383.1328
5. Roger Gutierrez	<a href="mailto:rg@rgbusinessinsurance.com">rg@rgbusinessinsurance.com</a>	Azusa	626.255.6039
6. Susan Johnson	<a href="mailto:loshj-ej@msn.com">loshj-ej@msn.com</a>	Green Valley	702.496.7302
7. Greg Jones	<a href="mailto:gregjones5300@gmail.com">gregjones5300@gmail.com</a>	Pasadena AH	626.807.0815
8. David Kreamer	<a href="mailto:dave.kreamer@unlv.edu">dave.kreamer@unlv.edu</a>	Las Vegas WON	702.306.7107
9. Rosie Mares	<a href="mailto:rosie@rmacounts.com">rosie@rmacounts.com</a>	Arcadia	323.243.8352
9. Diane O'Neal	<a href="mailto:dorunner5858@gmail.com">dorunner5858@gmail.com</a>	Rancho Cucamonga	909.261.3146
10. Bill Payne, Chair	<a href="mailto:bill.payne10@gmail.com">bill.payne10@gmail.com</a>	San Marino	626.252.9505
11. Roger Schulte	<a href="mailto:rogerschulte@gmail.com">rogerschulte@gmail.com</a>	Upland	909.532.0673
12. Zeb Welhorn	<a href="mailto:zeb@welhornmedia.com">zeb@welhornmedia.com</a>	Chino	909.973.908
13. Karen Whisenhunt	<a href="mailto:kwhis@cox.net">kwhis@cox.net</a>	Las Vegas	702.296.7984

January 17, 2020

## Global Scholars

### **Jacqueline Chen**

2019-20 Oxford (UK)

Degree: Masters

Sponsor Club: San Marino

Sponsor Club Representative: Bill Payne

### **Nicole Grajewski**

2018-21 Oxford (UK)

Degree: Doctorate

Sponsor Club: San Marino

Sponsor Club Representative: Bill Payne

### **Amy Elzik**

2018-19 Hult Int. Bus., London

Degree: Masters

Sponsor Club: Glendora

Sponsor Club Representative: Joe Cina

### **Larissa Phillips**

2017-18 London School of Economics

Degree: Masters

Sponsor Club: San Marino

Sponsor Club Representative: Bill Payne

### **Anna Casalme**

2017-18 Edinburgh

Degree: Masters

Sponsor Club: Chino

Sponsor Club Representative: Zeb Welborn

### **Gaelen Stanford-Moore**

2016-17 Cambridge

Degree: Masters

Sponsor Club: San Marino

Sponsor Club Representative: Bill Payne

### **Jennifer Binley**

2016-17 Cape Town

Degree: Masters

Sponsor Club: San Marino

Sponsor Club Representative: Bill Payne

### **Laura Breen**

2016-17 Cambridge University

Degree: Masters

Sponsor Club: Claremont Sunrise

Sponsor Club Representative: Parker Emerson

# Global Grant Scholars 2019-2020

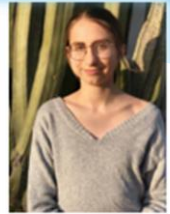
## Introducing District 5300 Global Scholars



Chantay BenShimon



Anna Enger



Natasha Oviedo



Kelsea Jeon

District 5300 has committed its three scholarships for 2019-20 to:

**Chantay BenShimon**, Peace & Conflict Prevention/Resolution, University of Tel Aviv, sponsored by the Las Vegas Club, Karen Whisenhunt

**Natasha Oviedo**, Peace & Conflict Prevention/Resolution, Queen's University, Belfast, sponsored by the Sierra Madre Club, Marilyn Diaz

**Anna Enger**, Economic & Community Development, Paris Institute of Political Studies, Sciences Po, Paris, sponsored by the San Marino Club, Bill Payne

**Kelsea Jeon**, Peace & Conflict Prevention/Resolution, Oxford (UK), sponsored by the Arcadia Club, Jesse Hamilton.

Each of these scholarships are subject to final approval by Rotary International....pending 2020-21 funding. Two, maybe three, Global Grant scholarships will be available for the 2020-21 Rotary year, and candidates will be interviewed as each completes their required paperwork.

## Global Grant Scholarships

What scholarships are available for 2020-2021?

**Two, maybe three**, Global Grant scholarships will be available for the **2020-21 Rotary year**, with interviews to be held March 1, 2021.

Who is eligible to apply?

The applicant must have **currently lived or attended college in District 5300**. A parent's home in District 5300 meets this requirement.

**The applicant may not be a Rotarian, nor a member of the immediate family of a Rotarian**, nor employed by any Rotary entity. Members of a Rotaract Club are eligible. The applicant will live and study abroad beginning in 2020 at the **university of one's choice**. The funds can be applied for a Masters or Doctorate degree.

An applicant's field of study (including demonstrated high school and college courses and extracurricular activities) **must align** with one (or more) [Areas of Focus](#).

What is the application process?

Any District 5300 **club may sponsor one applicant**.

A sponsoring **club agrees to contribute \$1,000** and to arrange for a Rotary Club in the host location to be the scholar's host.

District 5300 will contribute \$15,000 to each scholarship and TRF will match.

Who can I contact for more information?

District Foundation Chair Susan Johnson 702-496-7302 [loshj-ej@msn.com](mailto:loshj-ej@msn.com)  
Global Grants Scholar Chair Bill Payne 626-252-9505 [bill.payne10@gmail.com](mailto:bill.payne10@gmail.com)

BECOME A

# ROTARY SCHOLAR

Think globally  
Make a difference  
Become a leader



Photo courtesy of Toby Gibson 2006



“My studies will enable me to build better businesses that link small farmers to local and global food supply chains.”

Alex Dalley, a Rotary Scholar from Australia, earned an MBA at the Rotterdam School of Management in the Netherlands

Rotary offers prestigious international scholarships of **\$30,000 or more** for graduate students pursuing careers in fields that support:

- ☐ Peace and conflict prevention/resolution
- ☐ Disease prevention and treatment
- ☐ Water and sanitation
- ☐ Maternal and child health
- ☐ Basic education and literacy
- ☐ Economic and community development

**Find out more at [www.rotary.org](http://www.rotary.org) or contact your local Rotary club.**

Local Rotary scholarships opportunities may also be available in your area. Ask your local Rotary club.





# Peace Fellowship Scholars

**Florence Maher**

2017-18

School: International Christian University, Tokyo, Japan

Degree: Masters

Sponsor Club: Las Vegas

Sponsor Club Representative: Karen Whisenhunt

**Ashley Tevault**

2016-17

School: University of Bradford, Bradford, England

Degree: Masters

**Chantelle Doerksen**

2012

University of Queensland, Brisbane, Australia

Sponsor Club: Las Vegas

Sponsor Club Representative: Karen Whisenhunt

Application into R.I.

**Carli Burnam**, Dominican Republic

2021

Uppsala University, Sweden

Julie Todd, Green Valley Club

# Peace Fellowship Application

## Application process

The 2022-23 application will be available in February, 2021. Every year, districts must submit endorsed applications to The Rotary Foundation by 1 July. [Review](#) district endorsement instructions.

Follow these steps to ensure that your application receives consideration.

- . Review the [eligibility restrictions](#).
- . Research the curriculum and programs at each of the [Rotary Peace Centers](#). You will be asked to rank two centers you prefer for the Master's program and one center for the certificate program.
- . Submit your application by 31 May. Applications require a resume, academic and/or professional recommendations, essays, transcripts, social impact plan (certificate only), and test scores (master's only). All materials must be in English.
- . Get endorsed. As part of the application process, you need to connect with a Rotary district and get endorsed. Districts are regionally-based Rotary representatives located throughout the world. You can identify and contact your local Rotary district directly through the application platform. The district will interview you then submit an endorsement decision for your application.
- . Engage with Rotary. Use the [Club Finder](#) to locate the Rotary club nearest you. Connecting with a club is a great way to learn about Rotary's work in your community and around the world. Clubs recommendations are optional, but strongly recommended as part of your application.
- . Await selection results. Email notifications will be sent in November. If you are chosen for a fellowship, you will be told at which Peace Center you will study.
- . Apply for admission to the university where your Peace Center is located. Being selected for the fellowship does not mean you have been admitted to the university.

## Rotary Peace Centers University Partners



## Makerere University, Kampala, Uganda

RI opened this 7th Peace Center earlier in 2020, and will welcome Fellows in 2021.

## RECRUITMENT OF GLOBAL GRANT APPLICANTS

1. Who do you know, neighbor kids, from church, etc.
2. Article in the local paper, telling what the scholarship is, what its worth, and who to contact.
3. Reminding RYLA, TLC, 4-Way Test Contest, Stover Music Contest, Business Plan Competition participants who attend your meetings, that this scholarship opportunity exists
4. Asking the Guidance/College & Career Center staff at your local high school for their recommendations, based on:

Grades, beginning at 4.6 GPA

Activities throughout high school: leaders and high achievers

Candidates in Speech and Debate, or school plays/musicals interview well

“A” personality types...there is an Ambassador aspect to the scholarship

# Contact Info

Chair - Susan Johnson  
[loshj-ej@msn.com](mailto:loshj-ej@msn.com)  
Cell: 702-496-7302

District Grants – Michael Soden  
[msoden@dacdb.com](mailto:msoden@dacdb.com)  
Cell: 804-641-5063

Global Grants - Shab El Awar  
[shabdg201415@gmail.com](mailto:shabdg201415@gmail.com)  
Cell: 951-295-7358

Annual Programs Fund-SHARE - Mark Mariscal  
[markmariscal@yahoo.com](mailto:markmariscal@yahoo.com)  
Cell: 323-816-6713

Scholarships – Bill Payne  
[Bill.payne10@gmail.com](mailto:Bill.payne10@gmail.com)  
Cell: 626-252-9505

# QUESTIONS???

